



KRESIMIR ZADRAVEC

4th Floor Main Hospital outside Renal

Inspired by the Hollywood golden era, Hitchcock movies (particularly North by Northwest, Vertigo & Dial M for Murder) and actors such as Cary Grant and James Stewart, Kresimir Zadavec has been working on *The Strangers*, a digital photo series, for the past 3 years. His subjects are G scaled railway models shot in different sets and he works with backgrounds made out of shoeboxes or by simply placing models in the oven or on flower pots. For more information on Kresimir Zadavic www.kresimir.zadavec.bulb-magazine.com

LUCY JENKINSON

5th Floor Pathology/Trust Offices Corridor

The series of work looks into the exploration of beauty, pattern and repetition, striving for attention, showing delicate forms, organic structure and sculptural precision. There is a deep connection to science in the work, looking into cellular structure, brain neurons, and microscopic images as well as human organs.

Lucy has recently graduated from De Montfort University where she gained an honours degree in Fine Art. She currently works for Derby Hospitals at the Grove Rehabilitation Unit.

www.myspace.com/lucyscolouringin



DUNCAN THURLBY

1st Floor Courtyard

Duncan's inspiration is plucked from the natural world, never too literally or seriously, a sense of character and humour being essential in all of his creations. Using a range of hand working techniques the final pieces emerge as a result of this rather 'unnatural evolution'.

www.duncanthurlbysculpture.co.uk

ELEMENTS

SPRING/SUMMER 2009 EXHIBITIONS PROGRAMME

PETER J COUSINS

DEBORAH ALLITT

VALERIE DALLING

KEITH WRIGHT

ALISTAIR KENNEDY

CORRINA ROTHWELL

KRESIMIR ZADRAVEC

LUCY JENKINSON

DUNCAN THURLBY



Derby Hospitals Charitable Trust Fund no. 11087



Derby Hospitals NHS Foundation Trust wants the new Derby Hospital to have a uniquely welcoming environment. **air: arts to aid wellbeing** is our arts in hospital program. It supports the healing process with high quality art, which helps to create a therapeutic environment and a place in which patients, visitors and staff can engage positively with their surroundings.



PETER J COUSINS

Ground floor front entrance toward Medical Out-Patients

From his workshop in Wirksworth, Peter produces furniture, paintings and sculpture. He aims to give his work energy and a sense of rhythm, and create spaces that you want to explore. In these sculptures, cabinet making skills and tools are used together with painting techniques to produce unique pieces. His inspiration comes from the world around him, both seen and hidden.

www.petercousins.com

DEBORAH ALLITT

Ground floor outside the Faith Centre

Deborah's paintings are inspired by walks in hills and dales and coastal places. She works from memories of recent walks rather than using sketches or photos; the paintings are about colour, light, movement and feeling of space that she recalls rather than about detail.

www.deballitt.co.uk



VALERIE DALLING MOVING THE CHAIR

Ground Floor Maternity and Gynaecology

Through her *Moving the Chair* series, Valerie has captured fragments of a landscape, once described by William Wordsworth as "long, stern and desolate". Using only a point and shoot digital camera, she discovers a hidden beauty by looking deeper into her subject rather than simply viewing it.

www.valeriedalling.com

All work on exhibition is for sale, please contact the artist directly via their website or the Hospitals Arts Coordinator Juliet Cooper on cooper@hcp.co.uk or telephone 01332 786203



KEITH WRIGHT

2nd Floor Outside the Intensive Care Unit

Outside is a collection of images by contemporary photographer Keith Wright. The abstract works were all created following winter visits to a local nature reserve – Forbes Hole in Long Eaton.

More work can be seen on Keith's website

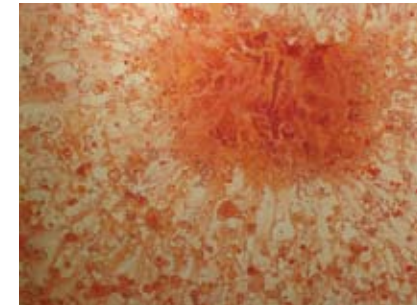
www.keith-wright.com

ALISTAIR KENNEDY

3rd Floor Main Hospital outside Wards

Histology is the study of the microscopic anatomy of cells and tissues of plants and animals. It is performed by examining a thin slice of tissue under a microscope. The process is enhanced through the use of different coloured dyes. This series *Histologies* is based on the visual elements within histological slide images.

www.alistairkennedy.co.uk



CORRINA ROTHWELL

3rd Floor Main Hospital outside Wards

Corrina is a Nottingham-based artist. She creates these cartoon-like pictures using a mouse designed like a pen to draw directly onto the computer screen. She is inspired by the everyday things which people do, or the odd thoughts she sometimes has, and uses these ideas to (hopefully!) bring a smile to peoples' faces. www.corrinarothwell.co.uk