

HEATHER HORSLEY



JOANNA JOHN



MARTIN HYDE



# LOCALITY

## VISUAL ARTS EXHIBITIONS AT ROYAL DERBY HOSPITAL SPRING/SUMMER 2011

### HEATHER HORSLEY

#### Level 4 outside Medical Wards

'A Familiar Place', is Heather's first Solo Exhibition in which she explores Derby's architecture and peoples' relationship to it, stemming from a fascination with the interplay between buildings and people.

Heather says, "Derby has so much to offer, it has a wealth of interesting architecture and distinctive places where people can relax, enjoy and relate to beautiful surroundings and the atmosphere it creates".

### JOANNA JOHN

#### Level 4 outside Renal Wards

"After studying for a BA (Hons) in Fine Art at the University of Derby, I am currently based at Banks' Mill Studios, where I am working on a series of paintings based on real and imaginary aerial views. The paintings in this exhibition are all of areas in the East Midlands, so viewers should be able to recognise some familiar locations."

### MARTIN HYDE

#### Level 5 toward Pathology

##### The Visitors

"Clockwork giants from another time and place loom - the visitors move silently through the city at the midnight hour."

M D Hyde is an artist from Derby. Previous art works include The Dead Good Kids and the Hair Day Series.

[www.martinhyde.co.uk](http://www.martinhyde.co.uk)



PAUL JOHNSTONE  
Level 1 toward  
Medical Outpatients

"When I paint I make abstract pieces that reflect my response to the beauty of the natural environment. Sometimes we all need to feel the grass beneath our feet."

### Help air arts to create uplifting moments at Derby Hospitals.

If you are a supporter of the arts, an artist, collective or organisation who would like to aid future exhibitions at Derby Hospitals NHS Foundation Trust please get in touch with the Arts Coordinator on [cooper@hcp.co.uk](mailto:cooper@hcp.co.uk) or 01332 786203



LOTTERY FUNDED



Derby Hospitals **NHS**  
NHS Foundation Trust



Derby Hospitals Charity

Derby Hospitals Charitable Trust Fund no. 11087



MUMS OF THE WORLD



MASSEY &amp; RODGERS



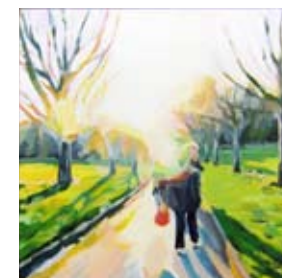
NICOLA LIDSTONE



ALISTAIR KENNEDY



JUSTINE NETTLETON



The spring and summer exhibition season shows a diverse collection of art works responding to the theme of *locality*.

All the artists featured in exhibitions, on every floor of the Royal Derby Hospital, have taken inspiration from the world outside their own windows. Ranging from local parks, homes, to maps, animals and science fiction. Some have taken great leaps of imagination whilst others carefully recreate the sensation of being in their favourite place.

More information on the hospital's arts programme can be found at [www.airarts.net](http://www.airarts.net)

## MUMS OF THE WORLD

Air Community Gallery  
Level 1 outside the  
Multi Faith Centre

'Mums of the World' celebrates the bond which unites woman all over the world. The project was developed through a partnership between Derby Museums and women learning English for Speakers of Other Languages (ESOL) with Derby College at Peartree Community School. The exhibition displays the group's creative work and also documents the process through photography.

[www.derby.gov.uk/museums](http://www.derby.gov.uk/museums)

Derby Museums  
and Art Gallery

## MASSEY & RODGERS

Level 1 Maternity  
and Gynaecology

Produced through the Derby Museums 'Creative Thought' project, these prints were made by local textile artists Barbara Massey and Helen Rogers.

The project aimed to inspire creativity through the museum collections and the prints were developed from drawings made at The Silk Mill and Derby Museum and Art Gallery. They offer a fresh, contemporary reinterpretation of museum objects.

[www.derby.gov.uk/museums](http://www.derby.gov.uk/museums)  
[www.masseyandrogers.co.uk](http://www.masseyandrogers.co.uk)

Derby Museums  
and Art Gallery

## DIANA SHEPPARD

Level 2 KTC opposite  
The Hand Clinic

**Arboretum Park Sketches**  
Di has created a series of large scale drawings on site at the hospital. *"I love the process of starting with a blank wall and as each day goes by the work grows and blossoms into something that was not entirely planned or imagined. The work will be inspired by my residency at The Arboretum Park in Derby. Days of sitting on park benches and sketching will be the starting point for this work."*

[www.artblock.org.uk](http://www.artblock.org.uk)

## NICOLA LIDSTONE

Level 2 Outside ICU

**Derbyshire Animals**  
Nicola's work reflects a curiosity into the appearance and personalities of animals. She is inspired by folklore, stately homes and the Derbyshire countryside close to her home. She draws quickly, using a mixture of paint, ink, pencil and pastel, aiming to capture the essence of the animal.

[www.nicolalidstone.co.uk](http://www.nicolalidstone.co.uk)

## ALISTAIR KENNEDY

Level 2 outside  
Surgical Wards

*"I thrive on exploring different techniques and processes, pushing the medium and combining media, creating experimental surfaces. I am interested in language and environment and each piece is a response to a situation or place."*

[www.alistairkennedy.co.uk](http://www.alistairkennedy.co.uk)

## JENNY SPEED

Level 3 outside  
Medical Wards

**Landscape needle-weavings**  
*"Having taught biology I was always amazed at the variety of forms of life that developed using the same basic building blocks and rules. This is probably one of the reasons why I enjoy this weaving hobby as they contain just a few materials, a wire ring, a variety of yarns, (some dyed by myself, to obtain the right colours) and follow a simple basic procedure, but each landscape is different and only on completion do I know what it finally looks like."*

## JUSTINE NETTLETON

Level 3 outside  
Medical Wards

Justine Nettleton's series 'Sunlight in my Eyes' began in 2010 during visits to Wollaton Park. It explores the bright light experienced when the sun is very low in the early morning or late afternoon; how shapes disintegrate and new, unexpected, forms emerge in the shadows. The 'Night Vision' series takes the theme of shadows in a very different direction; by using pencil drawings she creates an eerie reversal of light and shade.

[www.justinenettleton.com](http://www.justinenettleton.com)