

The following artists are featured as part of the SYNAPSE visual arts festival. Based on the theme Genesis SYNAPSE profiles the work of emerging artists from the three cities and counties of Derbyshire, Leicestershire and Nottinghamshire in order to create an environment where talent is supported and creativity is allowed to flourish. SYNAPSE festival work can also be seen at Deda, University of Derby, Derby Museum and Art Gallery, New Arts Exchange, BBC Big Screens in Derby and Leicester.



ALISON YULE **Level 3 wards**



Alison Yule is an award winning hand weaver, producing bespoke hand woven fabrics for interiors. Her inspiration is taken from her natural surroundings, whether local walks or house plants, and subtle shapes found within the detail of scientific observations. All her fabrics are

richly textured and sit comfortably in a contemporary setting.

www.alisonyuletextiles.co.uk

LORRAINE ASHLEY

Level 3 wards

Air of Hysteria

Lorraine has recently finished a degree as a mature student, at the University of Derby. Working with slate, creating light box installations she uses medical images, depicting her own very rare lung medical condition.



"Only six or seven women in the whole of the UK have this condition and I am currently under the care of Dr Hay at Royal Derby Hospital. I am incredibly interested in art and medical science collaborations and using medical imagery within my work. I also wish to raise awareness via my work of endometriosis, especially the rarer forms"

www.lorraineashley.com

Derby Hospitals NHS foundation trust wants the new Royal Derby Hospital to have a unique and welcoming environment, **air: arts to aid wellbeing** is our arts in hospitals program. Its intention is to support the healing process with high quality art which helps create a place in which patients, visitors and staff can engage positively with their environment.

If you would like to support future activity at Derby hospitals please contact Juliet Cooper Arts Coordinator on cooper@hcp.co.uk or telephone 01332 786203



LOTTERY FUNDED



Derby Hospitals **NHS**
NHS Foundation Trust

Derby Hospitals Charitable Trust Fund no. 11087

INSPIRED

VISUAL ART AT ROYAL DERBY HOSPITAL SPRING/SUMMER 2010



ANTOINETTE BIRCHILL
Dreamscape
2nd Floor ICU

Antoinette's Dreamscape paintings were inspired by the science and magic of the Northern Lights. Her expressive and dynamic abstract paintings are created using translucent inks and acrylic paints.

www.antoineburchill.com



Inspired, Spring/Summer 2010 exhibitions program at Royal Derby Hospital features work inspired by nature and science. Elemental feelings of light, water and organic form are explored, surprising beauty in medical information uncovered, stories of illness told and recovery celebrated. Most of the work exhibited is for sale.

LAURA ELLEN BACON

Level 1 toward Medical Outpatients

The making of 'Forms that Grew in the Rain'

"Working on site for 4 weeks gave me a wonderful chance to really tailor the forms to the hospital and meet some terrific people during the process. The title, 'The Forms That Grew in the Rain' is taken from reactions and comments I received whilst making the work. I will remember my time creating the work with much affection and hope my work will be received with intrigue and enjoyment."

www.lauraellenbacon.com



PAUL CUMMINS

Level 1 Courtyards Medical and Surgical Outpatients

Wild Flowers

A ceramic artist with a passion for hand building ceramic pieces. Paul draws on nature as his primary influence. Stylistically his work has been described as having an authentic Mediterranean feel which incorporates bright colour glazes and drawing directly onto the raw material. He makes unique, one-off pieces as well as large scale ceramic installations and his work is gaining widespread admiration.

www.paulcumminsceramics.com

AIR: COMMUNITY GALLERY

FEATURING ART WORK INSPIRED BY THE CITY AND PRODUCED WITHIN OUR LOCAL COMMUNITIES

Level 1 Outside The Mulfi Faith Centre

SURTAL ASIAN ARTS

Aspiration Normanton

March – May 2010

"a unique photographic and written word exhibition exploring the diverse places and faces of Normanton and discovering the gems it holds"

www.surtalarts.co.uk



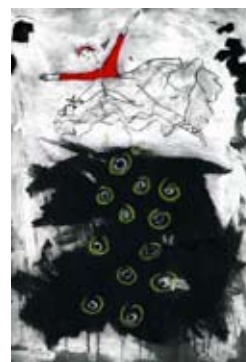
RACHEL CARTER

Inspiration behind" The Green Garden Project"

June to September 2010

Charting the project to engage a group of patients with mental health problems in a series of workshops to create willow sculptures for the RHS Chelsea Flower show.

www.rachelcarter.co.uk



NICKI DENNETT Level 1 Maternity and Gynaecology

'Ground Level'

The inspiration for Nicki's recent work came from a comparison of dance with the movement of organic vegetation in a local allotment. "I loved the way in which the vegetation twisted and curled into each other and was struck by the inventive use of CD's and plastic bottles used as scarecrows" Nicki's prints are made by distressing and painting carborundum onto card plates before inking by hand and running through an etching press.

www.nickidennett.co.uk

JULIE CLARE Level 2 KTC Entrance

Liquid Junctions

"Liquid Junctions represents water, a beautiful, unique and amazing substance with properties still yet to be discovered. I hope that this piece will enhance the entrance to the Kings Treatment Centre inspiring the imagination of those passing by." Liquid Junctions is formed over a steel frame and moulded from a mixture of Portland White cement and marble. It took 6 months to make and will be touring the country after this display in 2010.

www.jclare-sculpture.co.uk



LOUISE CAUL Level 4 Renal

After the Storm

This series of paintings is an expression of faith, hope and possibility. They were painted at the end of six months of treatment at the Derby City Hospital during a period of recovery, contemplation of life and the possibilities it holds. A belief that even in the midst of illness there are things shown to us, that we may never have otherwise known.

HANNAH LOBLEY Level 5 Pathology

Process

After accidentally leaving a book out in the rain, Hannah Loble developed award winning Paperwork. The pages are layered back into a solid wood like material; traditional wood working methods are then used to create objects from that material. The surface patterning of the paper when the objects are worked echoes wood grain.

Wood becomes paper becomes wood.

www.hl-web.net

